

# transform

BECAUSE EVERY HOUSE CAN BE A BEAUTIFUL HOME

## *second helpings*

This home in Brisbane's north received a renovation fit for its foodie occupants, Carla and

Scott. (For details of this delightfully workable space, see page 122.) Then read on to learn how to beat the clutter blues with brilliant storage solutions for every room, including the latest in bathroom cabinetry. Plus, find inspiration in the clean lines of three white kitchens.







BEFORE



*Deck* The new large rear deck features pretty criss-cross railings and a show-stopping oversized 'Franny Fluro' chandelier from Gia Collections. Outdoor ottomans, found at Temple & Webster, add a relaxed, loungey vibe. The servery window allows for conversation to flow between inside and out, with the 'Sweni' bar stools, from Uniqwa Furniture, providing casual seating. The handsome outdoor kitchen boasts a Matador barbecue, Ilve rangehood and pressed-metal splashback.



#### BUDGET BREAKDOWN

##### DECK

**Deck construction:** Merbau timber deck, \$30,000 (excluding outside kitchen), JCW Builders, 0401 934 184, jcwbuilders.com.au. **Chandelier:** 'Franny Fluro' chandelier in Pink, \$2400, Gia Collectione, giacollectione.com. **Bar stools:** 'Sweni' bar stools, \$399 each, Uniqwa Furniture, uniqwafurniture.com.au. **Servery window:** Bi-fold timber window, \$3600 (plus \$1000 to paint and install, JCW Builders), Woodworkers, (07) 3848 1383, woodworkers.com.au. **Doors:** French timber doors, \$9000 (plus \$1200 to paint and install, JCW Builders), Woodworkers.



## RENOVATION

## ENTERTAINER'S DELIGHT

IT TOOK QUITE A WHILE TO GET STARTED, BUT CARLA AND SCOTT'S STUNNING QUEENSLAND RENOVATION WAS WELL WORTH WAITING FOR

WORDS & STYLING TAHN SCOON PHOTOGRAPHY JOHN DOWNS

**Who lives here?** Carla and Scott, owners of Vanilla Pod Cafe, and their daughters Imogen, nine, and Lottie, eight.

**Location:** Brisbane's northern suburbs.

**Original property:** A three-bedroom 1930s Queenslander.

**Time frame:** Six months.

**Why this house?** Carla and Scott bought the home – that they describe “as the worst house in the loveliest street” – with a view to one day update. However, due to a flourishing business and the births of their daughters, the renovation happened seven years later than expected.

**Why the reno?** “We’d been focusing heavily on the business and decided 2014 was going to be about the house,” says Carla. “As foodies, we mostly wanted an entertainer’s kitchen and a large covered deck. Previously, we had big dinner parties in the garden and had to run around putting up tarps when it rained.”

**The works:** The existing kitchen and dining area was extended into the backyard and a large deck added. A small study and powder room were also included in the new extension. The front deck was replaced and a new entryway built. A fresh coat of paint was given to the bedrooms and new French doors were finished in glossy black. The total renovation, including building works, interior decorating and landscaping, cost \$300,000\*.

**Favourite aspect of the redesign?** “I love that the kitchen extends through to the deck, so we can cook and serve from both inside and out,” says Carla. “It’s also great because Scott cooks outside, which keeps him out of my kitchen!” >



## TIMELINE

## JANUARY 2014

Before the renovations begin, the existing bedrooms are cleaned and repainted. All household furniture is stored in the bedrooms while work is underway. The family moves out to house-sit for a friend. The kitchen and bathroom, as well as the disused outhouse, are demolished.

## FEBRUARY 2014

The old “faux tile” roof is removed

and a new tin roof installed.

The bubble-glass windows are replaced with frosted glass versions to let in more light.

## MARCH 2014

The rear external wall is taken down and new extension walls built, along with the framing for the new kitchen, pantry, study nook and powder room. New French doors and bi-fold servery windows are installed and the cabinetry work begins.

## APRIL 2014

The electrics and plumbing are fitted. A new roofed entry, white criss-cross railings and French doors are installed at the front of the house, and the deck is replaced.

A concrete path and driveway, also at the front, is laid.

## MAY 2014

Engineered stone benchtops are installed throughout the extension and are teamed with

new tiling in the bathrooms and kitchen, as well as a pressed-metal splashback in the outdoor kitchen. The interior walls are painted in Dulux Lexicon Half.

## JUNE 2014

The whole family moves back in as the exterior is still being painted in Dulux Beige Royal. Carla begins what she describes as “the fun part” – furnishing and decorating. The landscaping is well underway.





BEFORE



**Kitchen** As dedicated foodies, a functional-for-a-crowd kitchen was high on the couple's priority list. Carla opted for no stools around the central island bench. "The builder asked three times if I was sure I didn't want them, but I wanted to save the space for food prep," she says. Family and guests tend to gravitate to the bar stools on the deck instead. "I love that when I'm cooking and we have people over, they can sit and chat," she says. "It's very social. And it's beautiful for breakfast as it keeps all the crumbs outside!"

## BUDGET BREAKDOWN

### KITCHEN

**Cabinetry:** Shaker style in 2-pac Dulux Lexicon with benchtops in Caesarstone Bianco Drift, \$37,000 (includes outdoor kitchen), Wallin Cabinetmakers, 0418 884 969. **Tapware:** 'Bastow Georgian' mixer, \$410, Reece, reece.com.au. **Pendants:** Large 'Nickel Glass' pendants, \$299 each, One World Collection, oneworldcollection.com.au. **Appliances:** Ilve gas oven with teppanyaki plate, \$6999, Ilve canopy rangehood, \$2349, Winning Appliances, winningappliances.com.au. **Tiles:** 'Retro Blanco' bevel-edge subway tiles, \$40/sqm, Tilescope, (07) 3371 5777, tilescope.com.au.

### LIVING ROOM

**Sofas:** 'Uno' sofas, \$1780 each, King Living, kingliving.com.au. **Armchairs:** 'Punto' occasional chairs, \$599 each, Uniqwa Furniture, uniqwafurniture.com.au. **Cushions:** 'Johari Bazaar', \$139, 'Moroccan Tile', \$134, 'Spear-head Stripe', \$134, all Hook & Eye, hookandeye.com.au. **Coffee table:** For similar, try 'Monterey' table, \$279, Milan Direct, milandirect.com.au. **Rug:** For similar, try 'Madras' floor rug, \$199, Freedom, freedom.com.au. **Buffet:** 'Sienna Oriental' console table, \$2020, Alexander Santorini Imports, alexandersantorini.com.





*Living room* The newly extended living room, which overlooks the back garden, has been furnished with twin 'Uno' sofas from King Living and 'Punto' armchairs from Uniqwa Furniture. "We needed compact furniture to allow for the walkway and we wanted it to be up off the floor for airflow," says Carla. The two sofas were placed to encourage conversation. Scott picked up the decorative deer heads while on holiday in London, and Carla found the Hook & Eye cushions at a Sydney trade show. "I love that now you get views of both the front and back gardens and, of course, a beautiful cross breeze," she says. >





"We really wanted the *bathroom* to feel as if we were in a *luxury* hotel, so we chose *marble* floors and even a heated towel rail" ~ Carla

**Main bedroom** In keeping with Carla's love of colour, the custom bedhead is covered in Mokum 'Jardin des Tuileries' fabric in Chartreuse, with a Mokum 'Petit Trianon' throw in the same shade draping the end of the bed. The colourful cushions were made with fabric from No Chintz and create an exciting pattern-play with the floral fabrics. New plantation shutters from Image Blinds were installed throughout most of the home. "I love fabric and used to have curtains, but once we removed them all in preparation for the reno, we were amazed at how much light came streaming in, so we switched to shutters instead," explains Carla.

**Bathroom** The wall tiles, 'Lighthouse' in Antracit and Blanco, are a favourite inclusion. "We're really glad we were brave with our tile selection," Carla says. To add texture and interest to the washzone, the tile sizes vary between the splashback, main walls and the wall above the 'Kado Classic' freestanding bath from Reece. Towels from Citta Design add a welcoming splash of pattern to the black-and-white palette and the moss-wrapped hanging plants were a fun DIY project whipped up by Carla. A dividing wall that separates the toilet from the bath and vanity was a clever inclusion. "Being a family bathroom, it allows us to all use it at once without intruding on one another," says Carla. The custom cabinets, topped with Caesarstone in Raven, were designed around an existing set of Freedom storage boxes. "It was like buying a pair of shoes before buying the dress," says Carla with a laugh. To accommodate even more storage, the vanity mirror is recessed into the wall. "I don't like mess, so it hides things away and helps retain clean lines."

BUDGET BREAKDOWN	
<b>MAIN BEDROOM</b>	
<b>Bedhead:</b> Custom upholstered bedhead in Mokum 'Jardin des Tuileries', \$1400, find similar at <a href="http://heatherlydesign.com.au">heatherlydesign.com.au</a> .	
<b>Cushions:</b> 'Mosaic Ikat Multi' fabric, \$84/m, No Chintz, <a href="http://nochintz.com">nochintz.com</a> . <b>Shutters:</b> Plantation shutters, \$1600, Image Blinds, 1300 657 100, <a href="http://imageblinds.com.au">imageblinds.com.au</a> .	
<b>BATHROOM</b>	
<b>Wall tiles:</b> 'Lighthouse' in Antracit and Blanco, \$55/sqm, Telescope, (07) 3371 5777, <a href="http://telescope.com.au">telescope.com.au</a> . <b>Floor tiles:</b> Honed Carrara hexagonal marble, \$278/sqm, Telescope.	
<b>Bath:</b> 'Kado Classic' bath, \$1881.99, Reece, <a href="http://reece.com.au">reece.com.au</a> .	
<b>Tapware:</b> 'Dorf Loxton' lever set, \$325.99, Reece. <b>Cabinetry:</b> Shaker style in 2-pac Dulux Lexicon with benchtops in Caesarstone Raven, \$2500, Wallin Cabinetry, 0418 884 969. <b>Basin:</b> Duravit undermount basins, \$225 each, Winning Appliances, <a href="http://winningappliances.com.au">winningappliances.com.au</a> .	



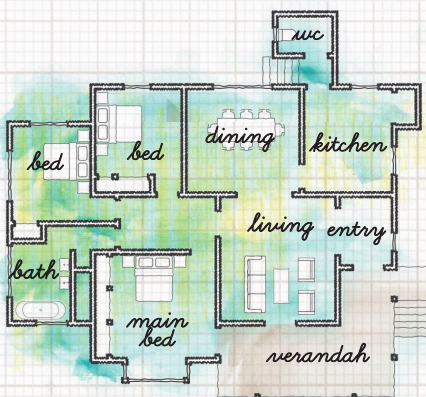


**Study** As Carla and Scott run their own business, they were determined to include a home office in the newly renovated living space, even if they had to squeeze it in. The compact result only measures a tiny three-and-a-half square metres but bespoke built-in cabinetry ensures every centimetre is used to its full potential. “I’m one of those organised people who likes everything at their fingertips,” says Carla. The well-planned space incorporates business, homework and craft storage, as well as a pretty little window seat for reading and reflecting. Carla found the cabinetry hardware online from Handle This.

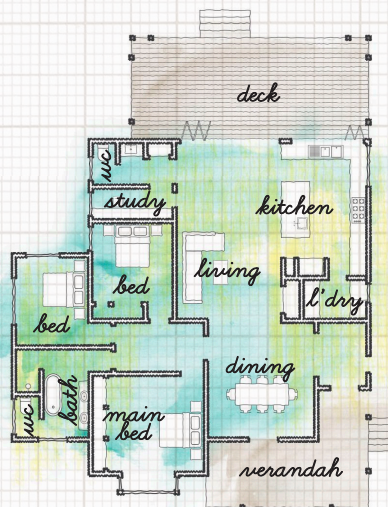


## DETAILS

BEFORE



AFTER



## LESSONS LEARNED

“Having an inspiration wall was invaluable,” says Carla. “I collected pictures from magazines, fabric cuttings, as well as paint and tile samples, then glued them all to a wall that remained throughout the renovation. My builders used it regularly as a reference.”

## CONTACTS

### Builder

Jeremy Walters,  
JCW Builders,  
0401 934 184,  
jcwbuilders.com.au.

### Cabinetmaker

Pete Wallin,  
Wallin Cabinetmakers,  
0418 884 969. 